



Sandiy Internet Data Center (IDC)



About Us

Sandiy is a premier provider of IT and business process outsourcing solutions, with over 10 years of experience managing mission-critical operations. For IT-driven companies who lack the resources to cost-effectively maintain all of their tactical IT operations, Sandiy's Outsourcing is an objective - driven method that helps them target and outsource specific, well-defined IT functions while keeping other business-critical operations under internal control. Unlike limited "boutique" services or "all-or-nothing" outsourcing services, our Outsourcing Solutions empower customers to more precisely align their IT infrastructure with strategic business objectives – to reduce costs and improve competitive flexibility.

Sandiy Internet Data Center (IDC)



SANDIY primary Internet Data Center (IDC) offering high-speed dedicated access solutions to high-end managed co-location solutions, our primary IDC is truly a state-of-the-art carrier-class facility. Our carrier neutral philosophy allows us to provide outstanding flexibility, reliability, availability, and scalability with one of the strongest SLA's in our industry.

Class-A Facility and Infrastructure:

- Redundant power and backup
- Redundant carrier connectivity
- Multiple GigE IP connectivity
- Redundant routing and switching
- Raised floors
- Environmental controls (Liebert HVAC)
- Diverse fire-suppression systems (FM-200)
- Digital video surveillance
- 24x7 secure access
- 24/7 network monitoring
- Seismic bracing

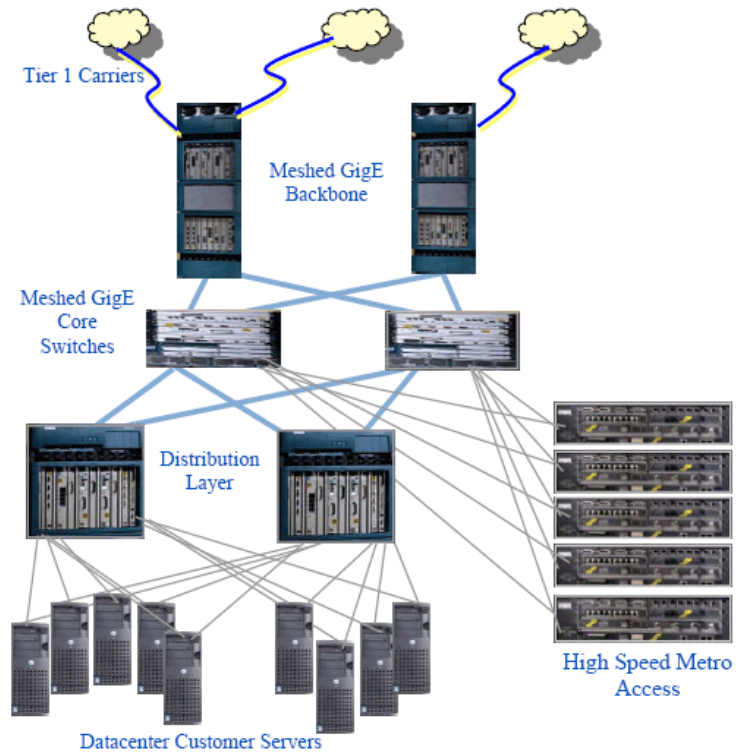
Space Accommodations:

SANDIY provides a variety of space solutions from small 3U (6-inch) open rack configurations to fully customized multi-rack private cages, secure cabinets, dedicated suites and secure vaults. We can design and deploy almost any configuration of floor space needed--very quickly.

Network Connectivity Infrastructure

We are carrier neutral. Our facility houses multiple OC48 (2.45 Gbps) fiber links to multiple diverse Telco carriers. This core connectivity infrastructure allows us to maintain and quickly scale multiple high-speed and redundant GigE fiber links to major Tier 1 Internet backbones, thus enabling us to deliver the finest Internet bandwidth quality available.

Our network infrastructure is engineered to avoid any single point of failure. High availability is achieved by using meshed and redundant router and switch configuration with cross-connects and BGP routing over multiple networks.



Security:

There are various levels of security controls incorporated inside and outside the facility. The first level of security entails proximity card access points to all external building entrances and internal IDC entrances. Man-trap (two secure and monitored doors) entrances are also employed at both the front and rear entrances of the IDC.

Inside the IDC, all private cages and secure cabinets are locked. These areas can only be accessed by authorized customers with valid proximity cards or SANDIY support and service personnel with proximity cards. Private suites employ biometric palm scanners for secure, authenticated entrance and exit.

All entry and exit points of the facility are monitored via digital video surveillance recording and proximity card reader logs. All walls of the IDC are reinforced barrier design with no windows. A raised-floor IDC design allows all primary power, Ethernet, Telco, and carrier cables and feeds to be delivered to their destination completely under the floor and securely out of harms way.



Environmental Control:

Total environmental control is essential for proper operation and long life of your equipment. Electronics are susceptible to heat, humidity, and airborne dust and contaminants. These systems require precision air conditioning to prevent costly downtime. Our IDC is equipped with 175-ton Liebert HVAC and humidity control systems, raised-flooring for optimum airflow distribution and management, and constant temperature and humidity monitoring.

Backup Power Generation:

SANDIY' IDC utilizes redundant UPS subsystems and a fully automated and redundant fail-over to diesel-generator backup power. Dual and fully redundant 1.25 Megawatt, 480V Caterpillar diesel generators are deployed to provide non-stop power for mission-critical applications. With 2500 gallons of onsite fuel storage and contracts for continuous refilling, our non-stop IDC can run indefinitely due to an N+1 architecture implementation in all key areas.

Power Distribution:

Power distribution and scalability is crucial to any IDC. SANDIY' power is derived from Silicon Valley Power. This power source drives multiple and fully redundant 500KVA MGE UPS subsystems. Power to racks and cabinets is conditioned and redundantly supplied via two MGE UPS subsystems. Our dual-fed Utility power is backed-up by dual, redundant 1.25 Megawatt diesel generators capable of running continuously without interruption.

UPS Subsystems:

Multiple 500KVA EPS6000 MGE UPS subsystems provide fully redundant power, enabling us to deliver superior IDC services in a non-stop environment backed by one of the strongest SLA's in our industry.

Fire Suppression:

Fire suppression is a very important element of IDC services. We deploy the following systems to provide the most protection from both fire and the collateral damage caused by conventional fire suppression systems.

- Fire Master (FM-200) gas-based fire suppression
- Very Early Smoke Detection Alarm (VESDA) systems
- Pre-action, double-interlocked, dry-pipe, suppression
- Below floor fire suppression

